



PERFORMANCE AND ENTERTAINMENT
IN THE HEART OF DALLAS-FORT WORTH



IN THE HEART OF THE DALLAS-FORT WORTH AREA, Texas Hall has a long history where musicians, dancers, and other performers flourish. The doors opened in 1965 with Louis Armstrong, and since then has hosted a wide variety of performers including Frank Zappa, Jerry Seinfeld, The Supremes, Maroon 5, Magic Johnson, Willie Nelson, Aerosmith, Lou Diamond Phillips, The U.S. Navy Band Commodores, Rihanna and more. Check us out and contact us for your next sensational event!



LOCATION



In the Heart of Dallas-Fort Worth, Texas
Area Population - over 5.7 million

Located in thriving Downtown Arlington



On the UT Arlington campus, among a diverse student population of over 44,000

VENUE SPECIFICATIONS



VENUE SIZE

- 76,000 sq. ft.

CAPACITY

- 2,611 full seating
- 1,259 half-house

PARKING

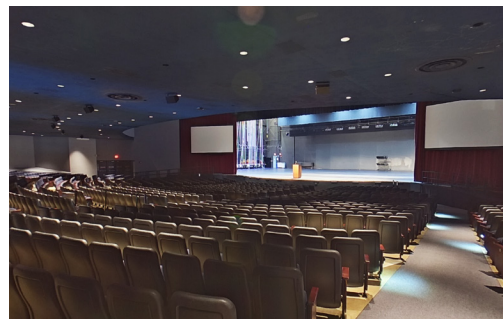
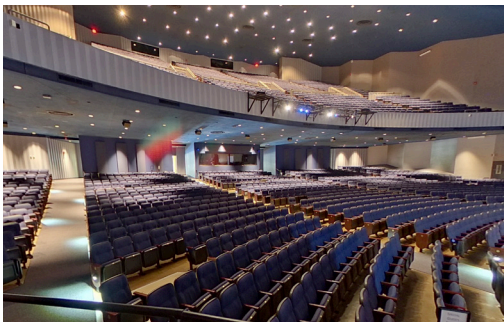
- 2,100 conveniently located spaces

AMENITIES

- 3 full-fare concession stands
- 3,000 sq. ft. backstage hospitality space, perfect for pre or post-event receptions

TICKETING

- 4 day-of-show ticket windows
- Ticketing services are provided through AXS and UTATickets.com, our on-site box office



VENUE SPECIFICATIONS

STAGE DIMENSIONS

128' wide x 58' deep (including thrust)

Proscenium 104' opening, 32' high

Production stage can mask down to 40' x 25' - flexible proscenium

3,000 sq. ft. backstage

Walkable grid at 66'

100' x 25' additional multipurpose commons

ORCHESTRA PIT 48' wide x 6' deep

RIGGING INFORMATION Newly renovated stage rigging, 5 motorized electrics, 36 weighted battens, and 10 pick points.

SHOW POWER

(2) 300amp 3 phase cam lock services

(2) 200amp 3 phase cam lock services

SOFT GOODS

All Goods Heavy Velour

(1) 40' x 60' burgundy front drape with fullness (cannot be paged)

(5) sets 15' x 30' black flat legs. Can combine for black drape.

(6) 12' x 85' black borders

(1) 30' x 63' white flat cyclorama

(1) 30' x 50' white scrim

(1) 30' x 60' grey curtain

MISCELLANEOUS (ADDITIONAL COST)

Ross Carbonite Solo package

(2) Projection Screen 11' x 19' Hanging or on stand

(2) Christie HD Projectors

Steinway 9' Concert Grand Piano

Baldwin Upright Orchestra Pit Only

LOADING DOCK Direct to stage loading dock

DRESSING ROOMS

Five (5) spacious rooms with temporary dressing rooms and optional backstage.

Dressing Rooms 1 thru 4 - Approximately 21' x 21' with lighted mirrors and counter, private restrooms and showers.

Dressing Room 5 - ("M" Room) for Press and/or Production, 15' x 21' with phone, conference table, shared restrooms and showers

VIP GREEN ROOMS Two (2) 10' x 10' rooms with private restrooms and showers or shared with the "M" Room

VENUE SPECIFICATIONS

AUDIO Full featured concert sound included with rental fees.

SPEAKER SYSTEM



Line Arrays	(20) Yi8 Array Modules (4) Yi12 Array Modules
Center Fill	(1) 12S-D Loudspeaker
Delay	(10) 8S Loudspeakers
Platform Subs	(2) B22 Subwoofers
Flown Subs	(3) 21S Subwoofers
Front Fill	(12) Innovox SL-2.1RH Loudspeakers
Floor Monitors	(7) MAX2 Stage Monitors
Over-stage Monitors	(5) MAX2 Stage Monitors

DIGITAL MIXING CONSOLE



SD12 Console	72 channels, 36 Group/Aux
D2 Stage Rack	48 inputs, 16 outputs
Waves Sound Grid	Diamond, H-Series, Studio Classis, CLA Classics, C6 Compressor

AMPLIFICATION



- (11) 10D 4-channel Amplifiers
- (2) 30D 4-channel Amplifiers
- ArrayProcessing technology

MICROPHONES

Wired Shure	SM-11, 53, 57, 58, 87 and Beta 58a
Crown	PCC160, at 857 QM, at Pro 47TL
Sennheiser	e855
AKG	C214
Drum Kit	Audix D2, D4, Shure Beta 52, SM81
Wireless	(5) Shure ULXp4 with 5 handheld, 5 lavalier, (8) Shure ULXD2 with 8 handheld, 8 lavalier, (2) Countryman E60W6L-SL Earsets

COMMUNICATIONS

Four-channel Clear-Com patchable throughout venue
Clear-Com Freespeak II digital wireless.

DIGITAL PATCHING MADI coax, Ethernet Cat6, LC Fiber, XLR

VENUE SPECIFICATIONS

LIGHTING

Use of House Plot included with facility rental fees.

(270) ETC Dimmer Circuits: 20A - 3 Pin, Motorized Electrics

Fixed Circuits to Balcony Rail, Attic Cove (5) "Electric" battens, floor pockets, grid picks. Circuits are paralleled through Socapex 19-pin connector patch bay.

LIGHTING CONTROL CONSOLE ETC

LIGHTING/EFFECTS (ADDITIONAL COST)

(8) 24" x 24" x 16" Box Booms

(2) Le Maitre G-300 Smoke/Hazer

(10) Apollo Spectra Q3 Scrollers

(4) Gam Twin Spins

(1) 5-Way ETC Opto Splitter

(1) Power Distro: 100A Camlock to 12 x 20A Edison

SPOTS (ADDITIONAL COST)

(2) Xenon Super Troopers, 2000W



LIGHTING INSTRUMENTS

Ellipsoidal Source 4

18	10°
5	19°
2	19° HD
30	26°
62	36°
6	50°

(14) Source 4 Par with Lens Kit

(65) Par 64 MFL/WFL

Top and Bottom cyc lights

(6) 18" Scoops, 1500W

VIDEO

(2) Projection Screen 11'x19' Hanging or on stand, Front only

(1) Projection Screen 10.5 x 14' Hanging or on stand, Front or Rear, Bottom skirt

(2) Christie DWU670-E Series Digital Projector with 16x10 aspect ratio and 1920x1200 pixel resolution

(1) Mac Mini for Pro Presenter Playback, Keynote Playback and Blackmagic configuration software

(1) Blackmagic Design ATEM 1 M/E Production Switcher with control panel

(1) Blackmagic Design SSD 4K Playback/Recorder

(1) HDMI Monitor for Multi-view Switcher Monitoring

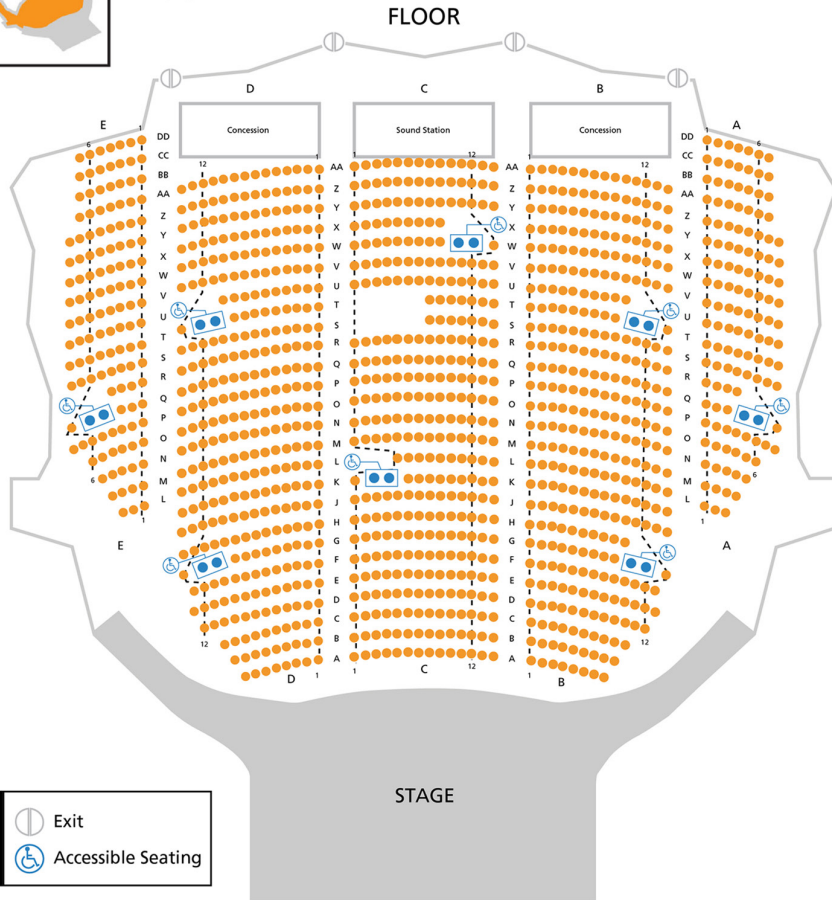
(2) Sony HDR-FX7 Handycam HDMI Camera with Libec T68

Cable pass-throughs to exterior production trucks located Stage Right, Stage Left, Balcony Right

FLOOR PLAN



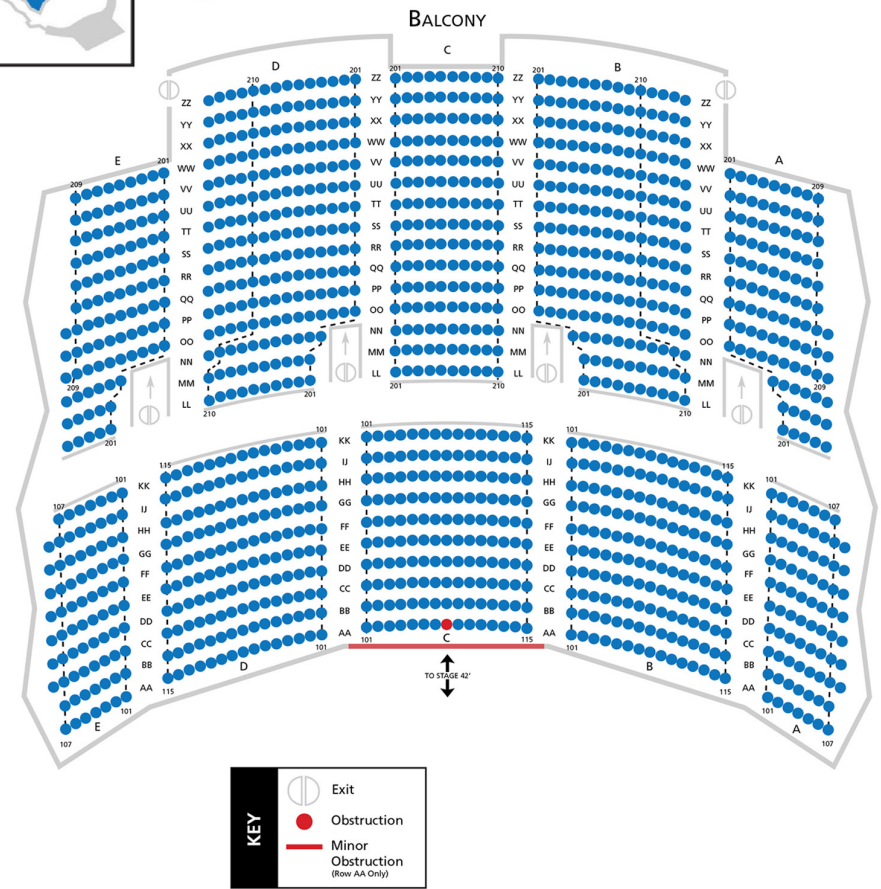
FLOOR



Floor - 1,259 Seats



BALCONY



Balcony - 1,352 Seats

2,611 Total Seats

CATERING & CONCESSIONS

CATERING

We are ready to assist you with everything from a basic coffee service to an elegant formal dinner, or anything in between. Our menus contain fresh and contemporary offerings. In addition, we are more than happy to create a custom menu for your group to meet any dietary or budgetary needs. Our staff will ensure that you are provided with extreme care and professionalism throughout your visit.

For all your catering requests, please contact:

Martha Watson, *Catering Manager*

214-299-8995

Email: sales@artisan-provisions.com

ALCOHOLIC BEVERAGES

Alcohol sales - featuring domestic and local craft beer, wine and liquor are available for events. Full bar service available.

CONCESSIONS

Texas Hall has three concession stands, offering a wide assortment of lunch, dinner, snack and beverage items, including beer, wine and cocktails. All concessions are provided by Ted E's.



TESTIMONIALS

“ Texas Hall is a great venue with a lot of history. Its staff, top to bottom, is professional and wants to make your production the best it can be. We are proud and happy to utilize the venue year after year for our productions because of the grandness of the space and care of the staff. They always make us feel like family - in the good way!

– **Todd Hart**, Executive Producer, Theatre Arlington

“ Texas Hall is our all time favorite place for our shows! The facilities and staff are outstanding and always helpful to us when we are moving in and out! We feel “at home” and very secure at all times.

– **Persis Forster**, Professional Actress & Owner,
Miss Persis Studio of Dance

“ Having worked in several venues throughout the country, you can easily spot good customer service. They were instrumental in making our event run smoothly. They were caring and engaged with our event.

– **Betsy Galleguillos**, Azteca Talent

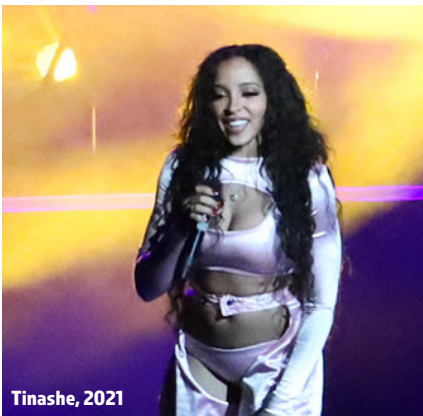
Indra Nooyi, 2023



Newsboys, 2022



Mac McAnally, 2024



Tinashe, 2021

LET'S MAKE A DEAL!

Email: txhbooking@uta.edu

Phone: 817-272-5584

World Ballet Series: Cinderella, 2023



Lecrae, 2023